

SYCLOP Range



5
YEARS
WARRANTY

SYCLOP 25 DMX

High lumen output and low energy consumption framing projector.
 Focusable optical zoom, beam angle from 18° to 42°.
 Framing by 4 quick-and-easy-positioning shutters.
 Light Leaks free.
 Tool free, quick-and-easy removal of the optical rotating barrel to convert it into a spotlight.
 Tilt angle 200° - azimuth 365°.
 Tool free access to the lenses. Holding positions by friction and locking screw. Handle free.
 Dimming control by DMX 512 signal.
 RDM addressing or defined in the factory.
 Factory configurations:

- 8 or 16 bits
- Linear dimming curve / Smoothed Linear curve / Squared curve / Logarithmic curve
- Start-up Power percentage without DMX signal.
- Percentage or last value in case of loss of DMX signal.

Input signal by Data track adaptor or XLR 5 in/out RJ 45 In/Out.
 230 Volts power supply : 3 circuits track adaptor Global Pulse or Eutrac Data, or Powercon TRUE 1 in/out for the hook mounting version.
 Integrated Gobo holder and magnetic filter holder.
 Hook mounting version: supplied with TRUE 1 power cable and plug 2P+E, length 1 meter.



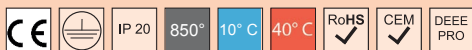
**MANUFACTURING
DESIGN**

Technical specifications

Light source type	LED
Led Power Rating	25W
Beam angle	18° to 42° (Zoom)
Color temperature (Step Macadam SDCM2)	3 000K - 4 000K
Led nominal output	2 470 lm - 2 530 lm
CRI (Ra)	97 - 97
R9	> 96
Lumen maintenance L80B10	105 000 operating hours
Dimming/Control	DMX 8 or 16 Bits
Thermal dissipation	Passive
Housing materials	Body : anodized aluminium – painted steel
Weight	2,400 Kg
Finish	Black or White - Other RAL colors upon request



View of the Treasures of the Al Thani Collection exhibition at the Hôtel de la Marine. © The © The Al Thani Collection 2021. All rights reserved. Photography by Marc Damage.



SPX Lighting - Offices : 10 rue des Marronniers 94 240 L'Hay Les Roses - France.

Factory : Zac des Coinchettes - 36 100 Issoudun - France.

Contacts +33 01 82 33 02 80 - contact@spx-lighting.com - www.spx-lighting.com

All rights reserved. Partial or complete reproductions is prohibited unless written permission of SPX Lighting. Information contained in this document does not contractually bind SPX Lighting. Despite the care SPX Lighting brings to the accuracy and precision of the present information, the responsibility of SPX Lighting can not be sought in case of inaccurate information. SPX Lighting reserves the right to change this information at any time without prior notice. SPX Lighting cannot be held liable for the consequences of the use of the present document. This publication does not imply any transfer of intellectual property rights.

Date of publication February 2023.

VERSION 23A



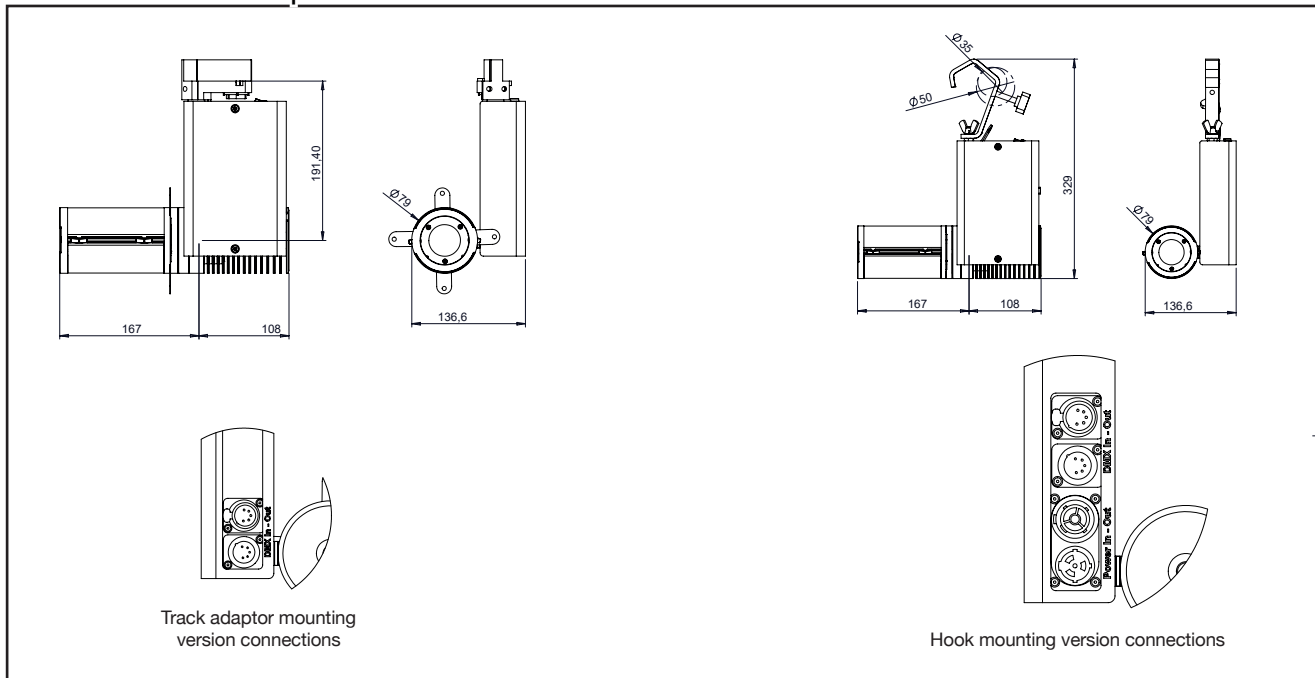


SYCLOP 25 DMX

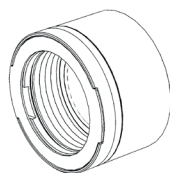
Mounting versions

3 Circuits Track Adaptor

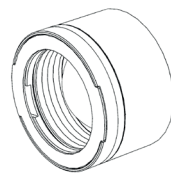
Hook



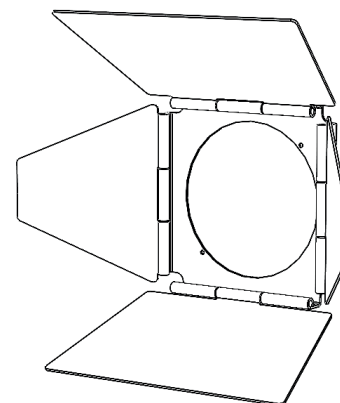
Accessories



22° Optical lens
Magnetic filter holder



40° Optical lens
Magnetic filter holder



Adjustable hinged barn-doors
(adaptable to the 22° or 40° optical lens)

Gobo / Glass Filter

Size E (37,5 mm)

Effective diameter 20 mm

Multilayers up to 4 mm maximum.



SPX Lighting - Offices : 10 rue des Marronniers 94 240 L'Hay Les Roses - France.

Factory : Zac des Coinchettes - 36 100 Issoudun - France.

Contacts +33 01 82 33 02 80 - contact@spx-lighting.com - www.spx-lighting.com

All rights reserved. Partial or complete reproductions is prohibited unless written permission of SPX Lighting. Information contained in this document does not contractually bind SPX Lighting. Despite the care SPX Lighting brings to the accuracy and precision of the present information, the responsibility of SPX Lighting can not be sought in case of inaccurate information. SPX Lighting reserves the right to change this information at any time without prior notice. SPX Lighting cannot be held liable for the consequences of the use of the present document. This publication does not imply any transfer of intellectual property rights.

Date of publication February 2023.

VERSION 23A



SYCLOP 25 DMX

Colorimetry Data

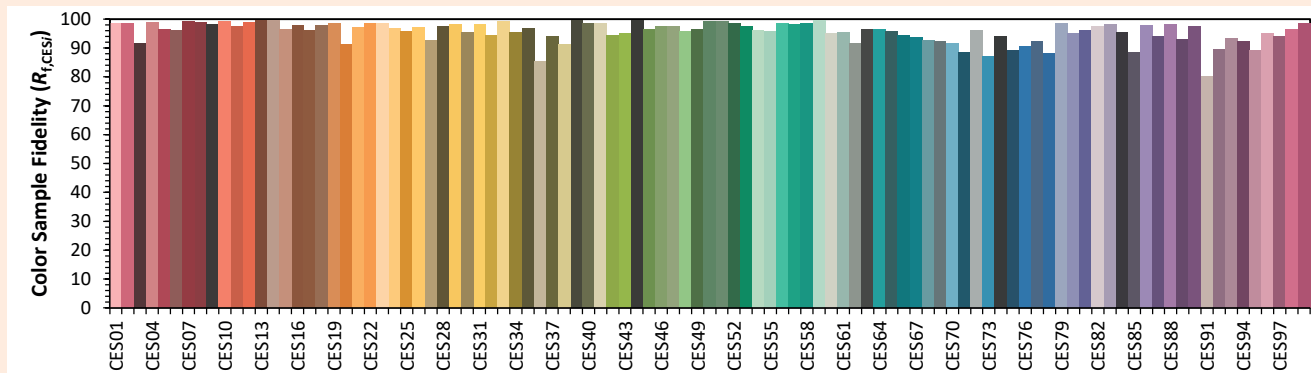
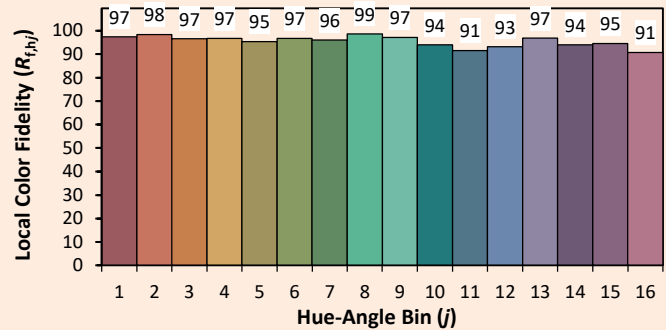
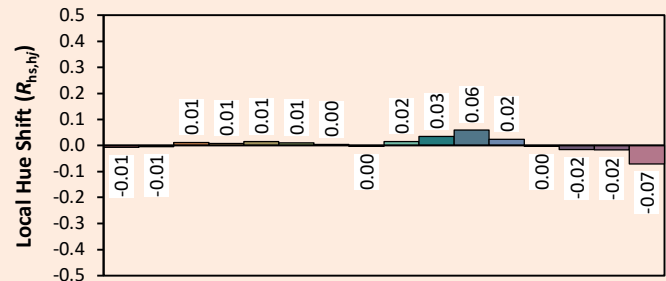
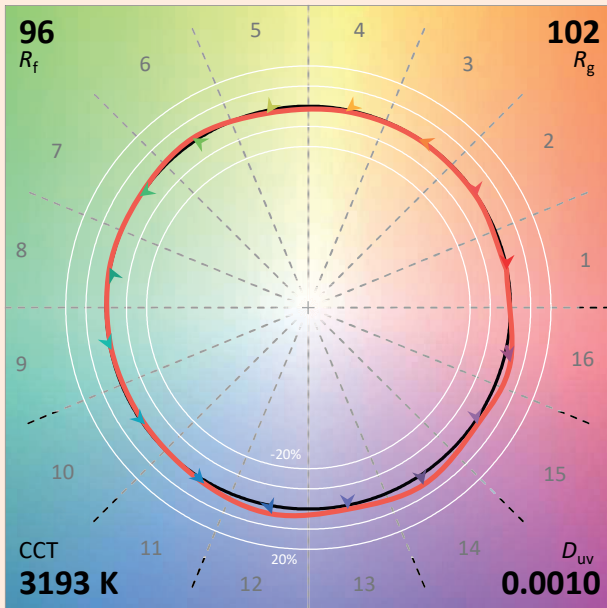
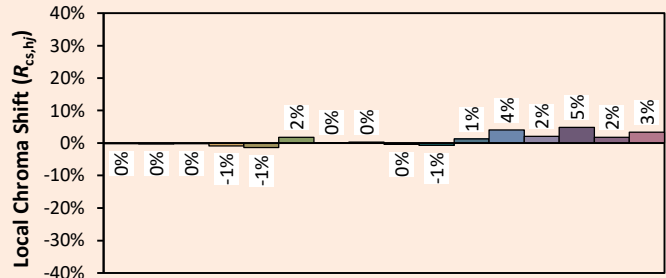
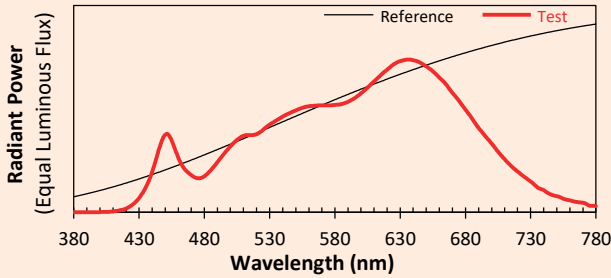


Source: COB 3000K

Manufacturer: SPX LIGHTING

Date: 06/07/2022

Model: SYCLOP 3000K



Notes:

Indicative values given as an indication, varying around the typical value.

x 0.4251
y 0.4021
u' 0.2438
v' 0.5189

CIE 13.3-1995 (CRI)	
R_a	98
R_g	99



SPX Lighting - Offices : 10 rue des Marronniers 94 240 L'Hay Les Roses - France.

Factory : Zac des Coinchettes - 36 100 Issoudun - France.

Contacts +33 01 82 33 02 80 - contact@spx-lighting.com - www.spx-lighting.com

All rights reserved. Partial or complete reproductions is prohibited unless written permission of SPX Lighting. Information contained in this document does not contractually bind SPX Lighting. Despite the care SPX Lighting brings to the accuracy and precision of the present information, the responsibility of SPX Lighting can not be sought in case of inaccurate information. SPX Lighting reserves the right to change this information at any time without prior notice. SPX Lighting cannot be held liable for the consequences of the use of the present document. This publication does not imply any transfer of intellectual property rights.

Date of publication February 2023.

VERSION 23A



SYCLOP 25 DMX

Colorimetry Data

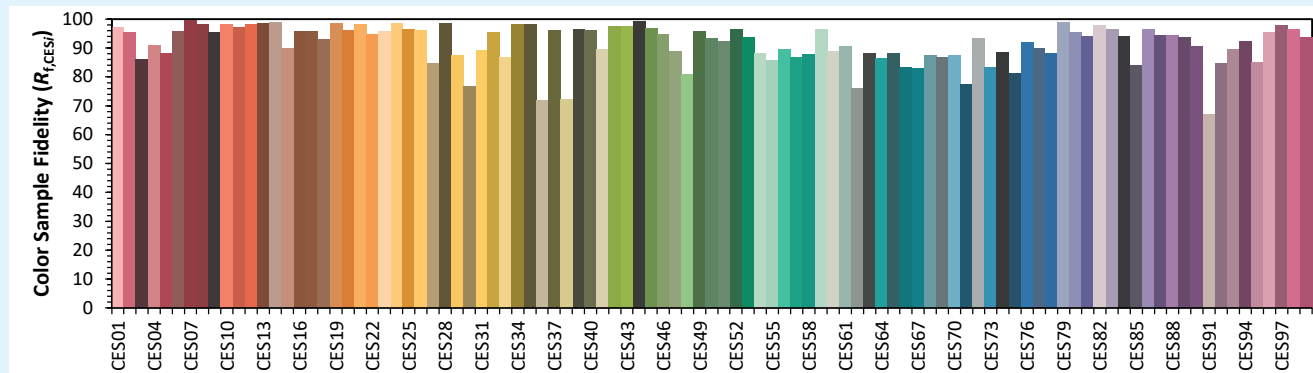
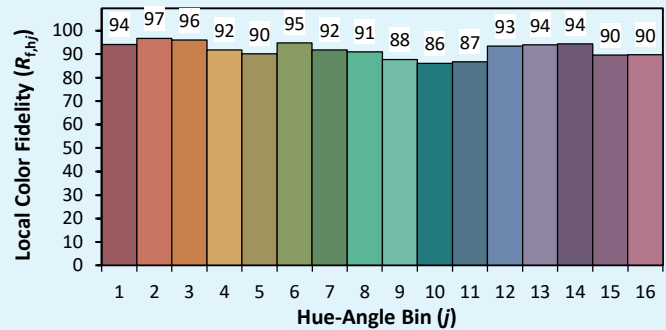
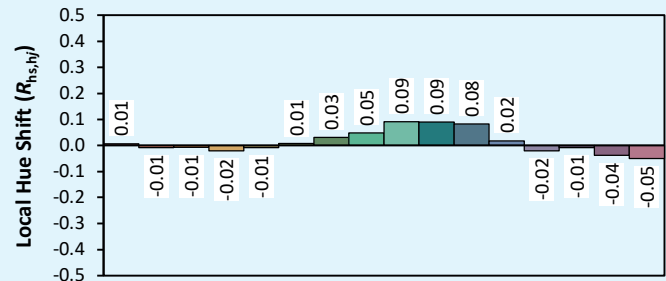
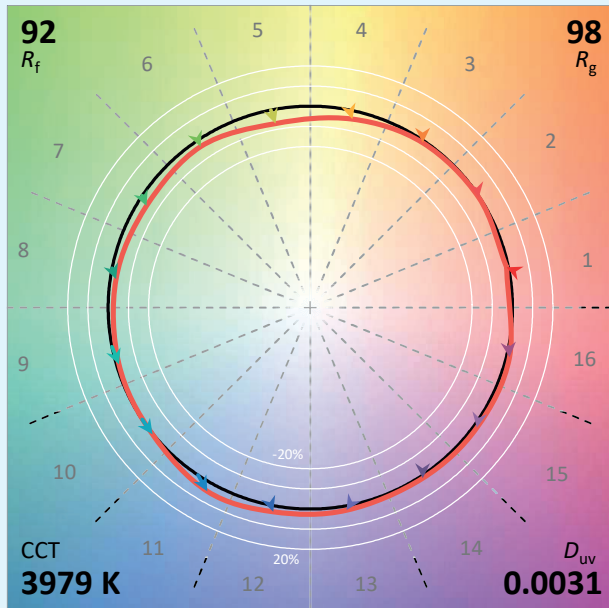
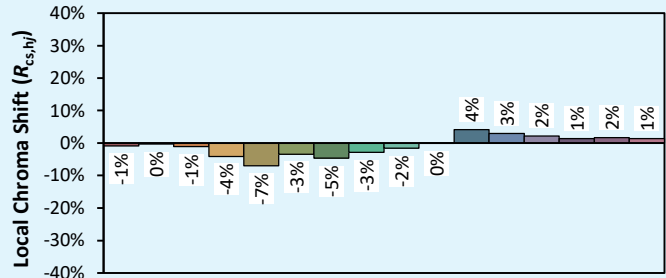
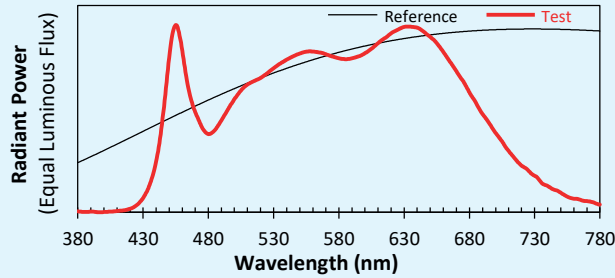


Source: COB 4000K

Manufacturer: SPX LIGHTING

Date: 06/07/2022

Model: SYCLOP 4000K



Notes:

Indicative values given as an indication, varying around the typical value.

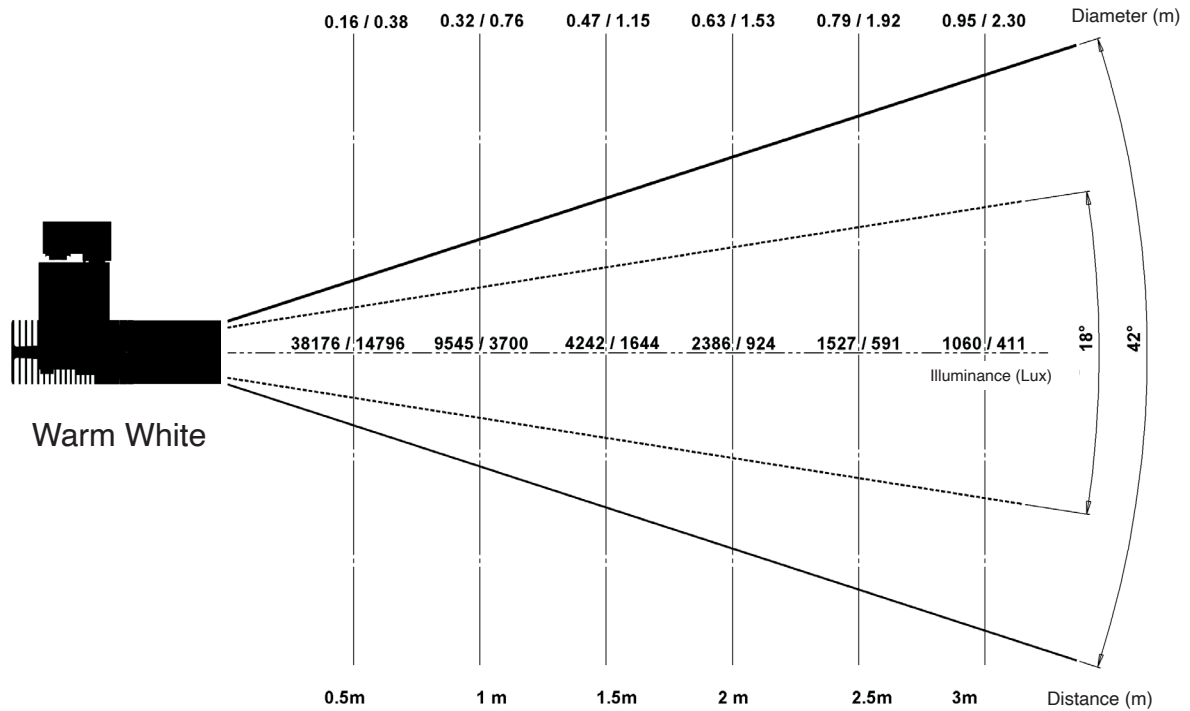
x 0.3836
y 0.3855
u' 0.2237
v' 0.5058

CIE 13.3-1995 (CRI)	
R _a	96
R ₉	96

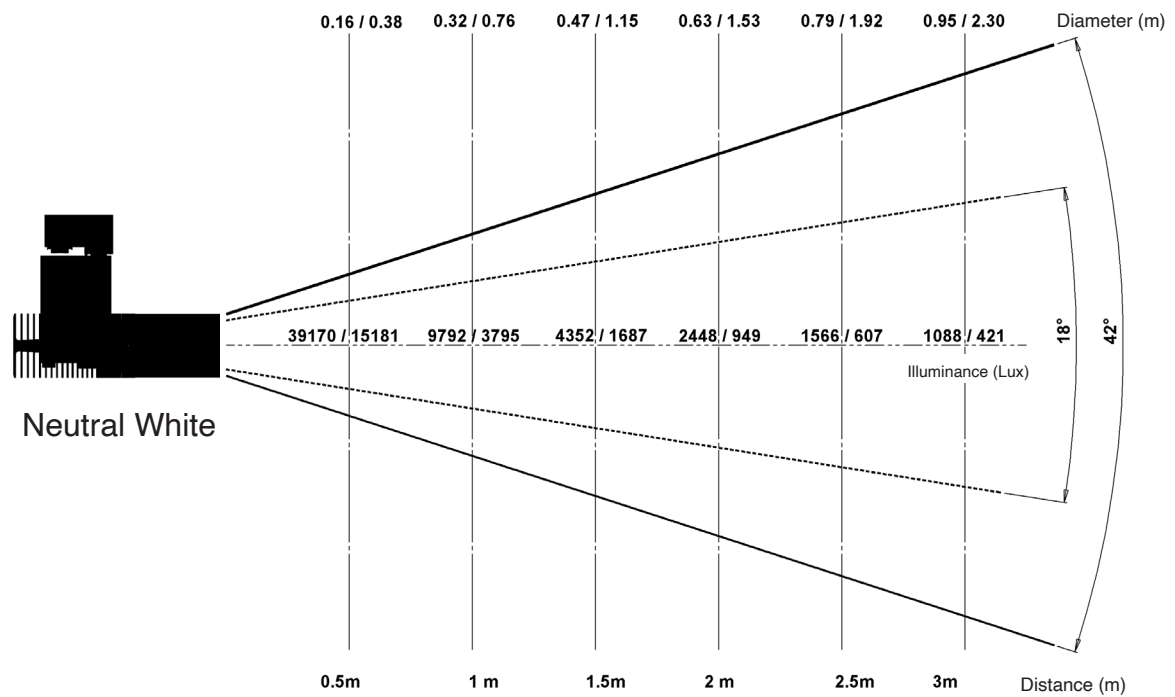


SYCLOP 25 DMX

Photometry Data



SYCLOP 25 - 3000K



SYCLOP 25 - 4000K



SPX Lighting - Offices : 10 rue des Marronniers 94 240 L'Hay Les Roses - France.
 Factory : Zac des Coinchettes - 36 100 Issoudun - France.
 Contacts +33 01 82 33 02 80 - contact@spx-lighting.com - www.spx-lighting.com

All rights reserved. Partial or complete reproductions is prohibited unless written permission of SPX Lighting. Information contained in this document does not contractually bind SPX Lighting. Despite the care SPX Lighting brings to the accuracy and precision of the present information, the responsibility of SPX Lighting can not be sought in case of inaccurate information. SPX Lighting reserves the right to change this information at any time without prior notice. SPX Lighting cannot be held liable for the consequences of the use of the present document. This publication does not imply any transfer of intellectual property rights.

Version 23A
 Date of publication February 2023.



SYCLOP 25 DMX

Items References



Power Consumption	Mounting Versions	Dimming Control	Zoom	Color Temperature	Black FINish	White FINish
29W	HOOK XLR5 IN / OUT + PowerCON IN/ OUT	DMX	18° to 42°	Warm White	CAI00704	CAI00714
29W	HOOK XLR5 IN / OUT + PowerCON IN/ OUT	DMX	18° to 42°	Neutral White	CAI00705	CAI00715
29W	3 Circuits Track Adaptor Nordic EUTRAC + DATA BUS	DMX	18° to 42°	Warm White	CAI00706	CAI00716
29W	3 Circuits Track Adaptor Nordic EUTRAC + DATA BUS	DMX	18° to 42°	Neutral White	CAI00707	CAI00717
29W	3 Circuits Track Adaptor Nordic + XLR5 DMX IN/OUT	DMX	18° to 42°	Warm White	CAI00708	CAI00718
29W	3 Circuits Track Adaptor Nordic + XLR5 DMX IN/OUT	DMX	18° to 42°	Neutral White	CAI00709	CAI00719
29W	3 Circuits Track Adaptor Nordic PULSE DMX	DMX	18° to 42°	Warm White	CAI00710	CAI00720
29W	3 Circuits Track Adaptor Nordic PULSE DMX	DMX	18° to 42°	Neutral White	CAI00711	CAI00721
29W	RJ45 IN/OUT + Power con IN/OUT	DMX	18° to 42°	Warm White	CAI00712	CAI00722
29W	RJ45 IN/OUT + Power con IN/OUT	DMX	18° to 42°	Neutral White	CAI00713	CAI00723

Accessories References

	Black Finish	White Finish
22° Optical Lens	ACC00189	ACC00220
40° Optical Lens	ACC00222	ACC00223
Barn doors	ACC00225	ACC00226
DMX connections for EUTRAC Tracks	EUT 99 762 2	EUT 99 762 1
DMX connections for NORDIC Tracks	ACC00352	ACC00388



SPX Lighting Factory - Issoudun - France



SPX Lighting - Offices : 10 rue des Marronniers 94 240 L'Hay Les Roses - France.

Factory : Zac des Coinchettes - 36 100 Issoudun - France.

Contacts +33 01 82 33 02 80 - contact@spx-lighting.com - www.spx-lighting.com

All rights reserved. Partial or complete reproductions is prohibited unless written permission of SPX Lighting. Information contained in this document does not contractually bind SPX Lighting. Despite the care SPX Lighting brings to the accuracy and precision of the present information, the responsibility of SPX Lighting can not be sought in case of inaccurate information. SPX Lighting reserves the right to change this information at any time without prior notice. SPX Lighting cannot be held liable for the consequences of the use of the present document. This publication does not imply any transfer of intellectual property rights.

Date of publication February 2023.

VERSION 23A

